



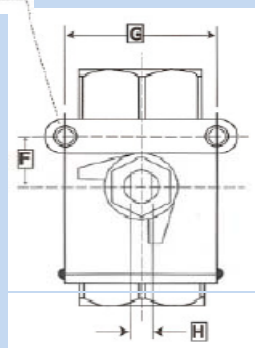
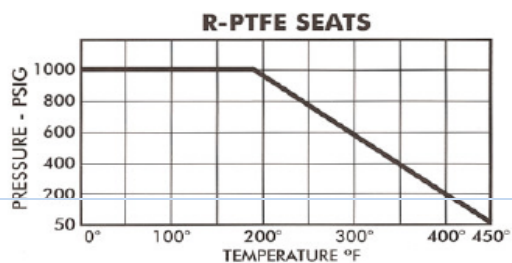
SEAL-WELDED BALL VALVE DATA

MODEL W10 - 1000 WOG

FULL PORT ~ NACE MR-01-75 COMPLIANT ~ RTFE SEATS/SEALS

	Cv VALUE	MAX. OPERATING TORQUE	ISO PATTERN
1/4"	10	60 IN-LB	N/A
3/8"	16	60 IN-LB	N/A
1/2"	32	120 IN-LB	N/A
3/4"	62	160 IN-LB	N/A
1"	115	180 IN-LB	N/A
1-1/4"	140	260 IN-LB	N/A
1-1/2"	365	350 IN-LB	N/A
2"	450	420 IN-LB	N/A
3"	1100	800 IN-LB	N/A

MOUNTING HOLES
 1/4" - 3/4" 10-24 NC
 1" - 3" 1/4-20 NC

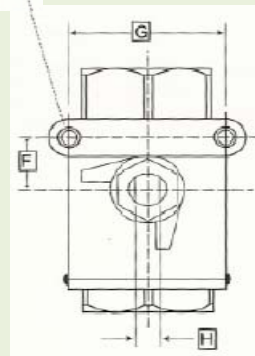
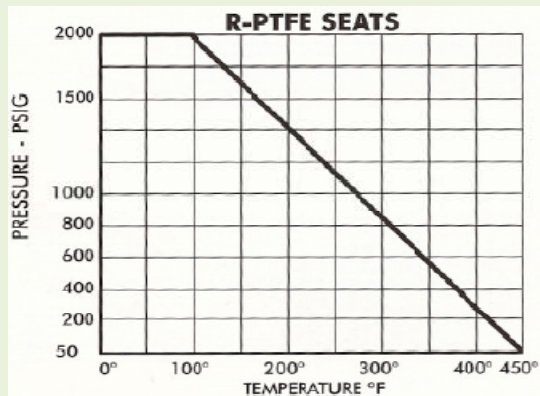


MODEL W20 - 2000 WOG

FULL & REDUCED PORT ~ NACE MR-01-75 COMPLIANT ~ RTFE SEATS/SEALS

	Cv VALUE	MAX. OPERATING TORQUE	ISO PATTERN
1/4"	9	40 IN-LB	N/A
3/8"	9	40 IN-LB	N/A
1/2"	16	75 IN-LB	N/A
3/4"	27	120 IN-LB	N/A
1"	42	140 IN-LB	N/A
1-1/4"	52	250 IN-LB	N/A
1-1/2"	80	300 IN-LB	N/A
2"	115	320 IN-LB	N/A

MOUNTING HOLES
 1/4" - 1" 10-24 NC
 1-1/4" - 2" ... 1/4-20 NC



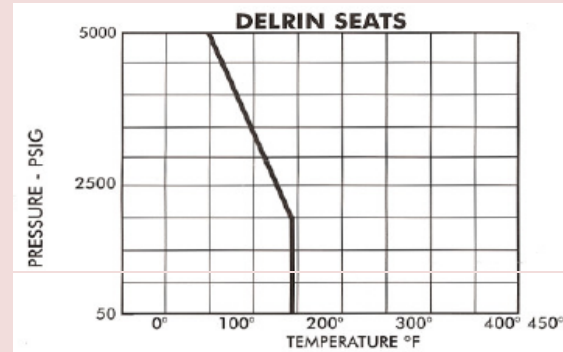
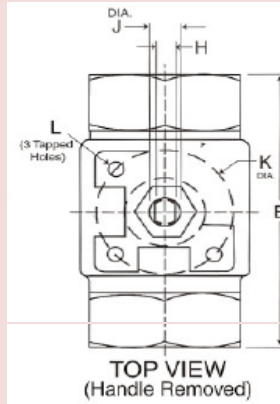


SEAL-WELDED BALL VALVE DATA

MODEL W50 - 5000 WOG

FULL & REDUCED PORT ~ NACE MR-01-75 COMPLIANT ~ DELRIN/VITON SEATS/SEALS
 FIRE-SAFE TO API 607 4TH EDITION

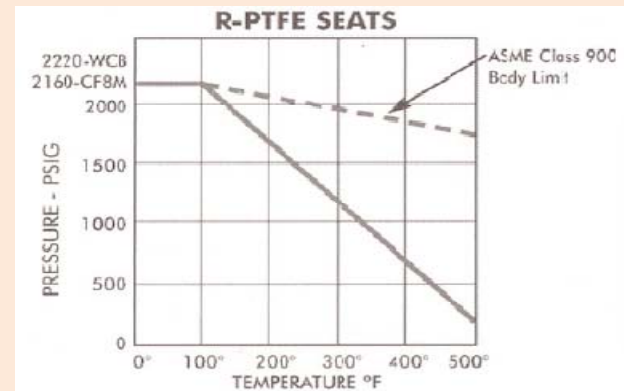
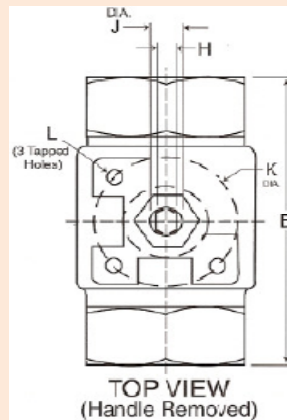
	Cv VALUE	MAX. OPERATING TORQUE	ISO PATTERN	L (3 TAPPED HOLES)
1/4" FP	10	75 IN-LB	F03	1/4" - 20 UNC
3/8" FP	13	75 IN-LB	F03	1/4" - 20 UNC
1/2" FP	16	75 IN-LB	F03	1/4" - 20 UNC
3/4" FP	32	120 IN-LB	F04	1/4" - 20 UNC
1" RP	44	200 IN-LB	F04	1/4" - 20 UNC
1" FP	62	400 IN-LB	F05	1/4" - 20 UNC
1-1/2" FP	140	750 IN-LB	F07	5/16" - 18 UNC
2" RP	120	750 IN-LB	F07	5/16" - 18 UNC



MODEL W21 - ASME CLASS 900

FULL & REDUCED PORT ~ NACE MR-01-75 COMPLIANT ~ RTPFE/GRAPHITE SEATS/SEALS
 FIRE-SAFE TO API 607 4TH EDITION ~ API 608 COMPLIANT ~ ASME B16.34 COMPLIANT

	Cv VALUE	MAX. OPERATING TORQUE	ISO PATTERN	L (3 TAPPED HOLES)
1/4"	10	40 IN-LB	F03	1/4" - 20 UNC
3/8"	10	40 IN-LB	F03	1/4" - 20 UNC
1/2"	16	75 IN-LB	F03	1/4" - 20 UNC
3/4"	27	120 IN-LB	F04	1/4" - 20 UNC
1"	42	140 IN-LB	F04	1/4" - 20 UNC
1-1/4"	52	250 IN-LB	F05	1/4" - 20 UNC
1-1/2"	80	300 IN-LB	F05	1/4" - 20 UNC
2"	115	320 IN-LB	F05	1/4" - 20 UNC



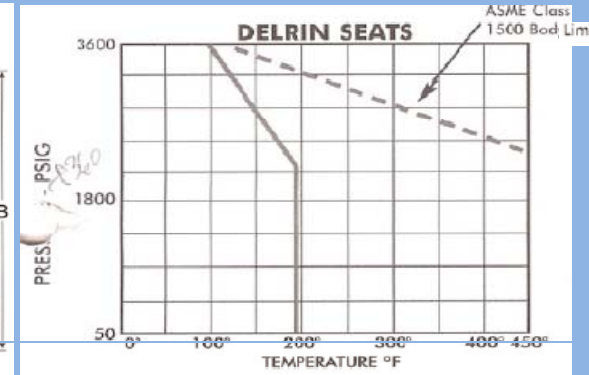
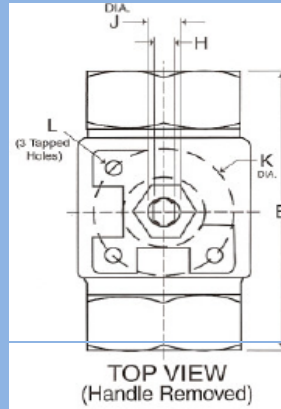


SEAL-WELDED BALL VALVE DATA

MODEL W36 - ASME CLASS 1500

FULL & REDUCED PORT ~ NACE MR-01-75 COMPLIANT ~ DELRIN/VITON SEATS/SEALS (OR PEEK FOR SW VALVES)
 FIRE-SAFE TO API 607 4TH EDITION ~ API 608 COMPLIANT ~ ASME B16.34 COMPLIANT

	Cv VALUE	MAX. OPERATING TORQUE - DELRIN SEATS	MAX. OPERATING TORQUE - PEEK SEATS	ISO PATTERN	L (3 TAPPED HOLES)
1/4" FP	10	75 IN-LB	100 IN-LB	F03	1/4" - 20 UNC
3/8" RP	10	75 IN-LB	100 IN-LB	F03	1/4" - 20 UNC
1/2" FP	16	75 IN-LB	140 IN-LB	F03	1/4" - 20 UNC
3/4" FP	32	120 IN-LB	270 IN-LB	F04	1/4" - 20 UNC
1" RP	44	200 IN-LB	270 IN-LB	F04	1/4" - 20 UNC
1" FP	62	400 IN-LB	700 IN-LB	F05	1/4" - 20 UNC
1-1/2" FP	140	750 IN-LB	1200 IN-LB	F07	5/16" - 18 UNC
2" RP	120	750 IN-LB	1200 IN-LB	F07	5/16" - 18 UNC



MODEL W60 - ASME CLASS 2500

FULL & REDUCED PORT ~ NACE MR-01-75 COMPLIANT ~ PEEK/VITON SEATS/SEALS
 FIRE-SAFE TO API 607 4TH EDITION ~ API 608 COMPLIANT ~ ASME B16.34 COMPLIANT

	Cv VALUE	MAX. OPERATING TORQUE	ISO PATTERN	L (3 TAPPED HOLES)
1/4" FP	10	100 IN-LB	F03	1/4" - 20 UNC
3/8" RP	10	100 IN-LB	F03	1/4" - 20 UNC
1/2" FP	16	140 IN-LB	F03	1/4" - 20 UNC
3/4" FP	32	270 IN-LB	F04	1/4" - 20 UNC
1" RP	44	270 IN-LB	F04	1/4" - 20 UNC
1" FP	62	700 IN-LB	F05	1/4" - 20 UNC
1-1/2" FP	140	1200 IN-LB	F07	5/16" - 18 UNC
2" RP	120	1200 IN-LB	F07	5/16" - 18 UNC

