

UNIT	SIZE	L	d	E	W	A	NPT	H(OPEN)	H(CLOSE)	WEIGHT(Kg)
mm	15	76	9.5	32	90	17.6	1/2	144.2	132.2	1.5
inch	$\frac{1}{2}$	2.99	0.37	1.26	3.54	0.69	1/2	5.68	5.20	1.5
	20	86	12.7	37	90	18	3/4	151.1	135.8	2
	$\frac{3}{4}$	3.39	0.5	1.46	3.54	0.71	3/4	5.95	5.35	2
	25	102	17.5	46	110	23	1	178.4	157.5	3
	1	4.02	0.69	1.81	4.38	0.91	1	7.02	6.20	3
	32	118	23.8	62	150	23.5	1-1/4	245	214.5	4
	1- $\frac{1}{4}$	4.65	0.94	2.44	5.91	0.93	1-1/4	9.65	8.44	4
	40	118	28.6	62	150	23.5	1-1/2	247.1	214.5	5.5
	1- $\frac{1}{2}$	4.65	1.13	2.44	5.91	0.93	1-1/2	9.73	8.44	5.5
	50	132	36.5	76	150	24	2	268.7	227.7	7.5
	2	5.20	1.44	2.99	5.91	0.94	2	10.58	8.96	7.5

APPLICABLE STANDARDS & TECHNICAL NOTES:

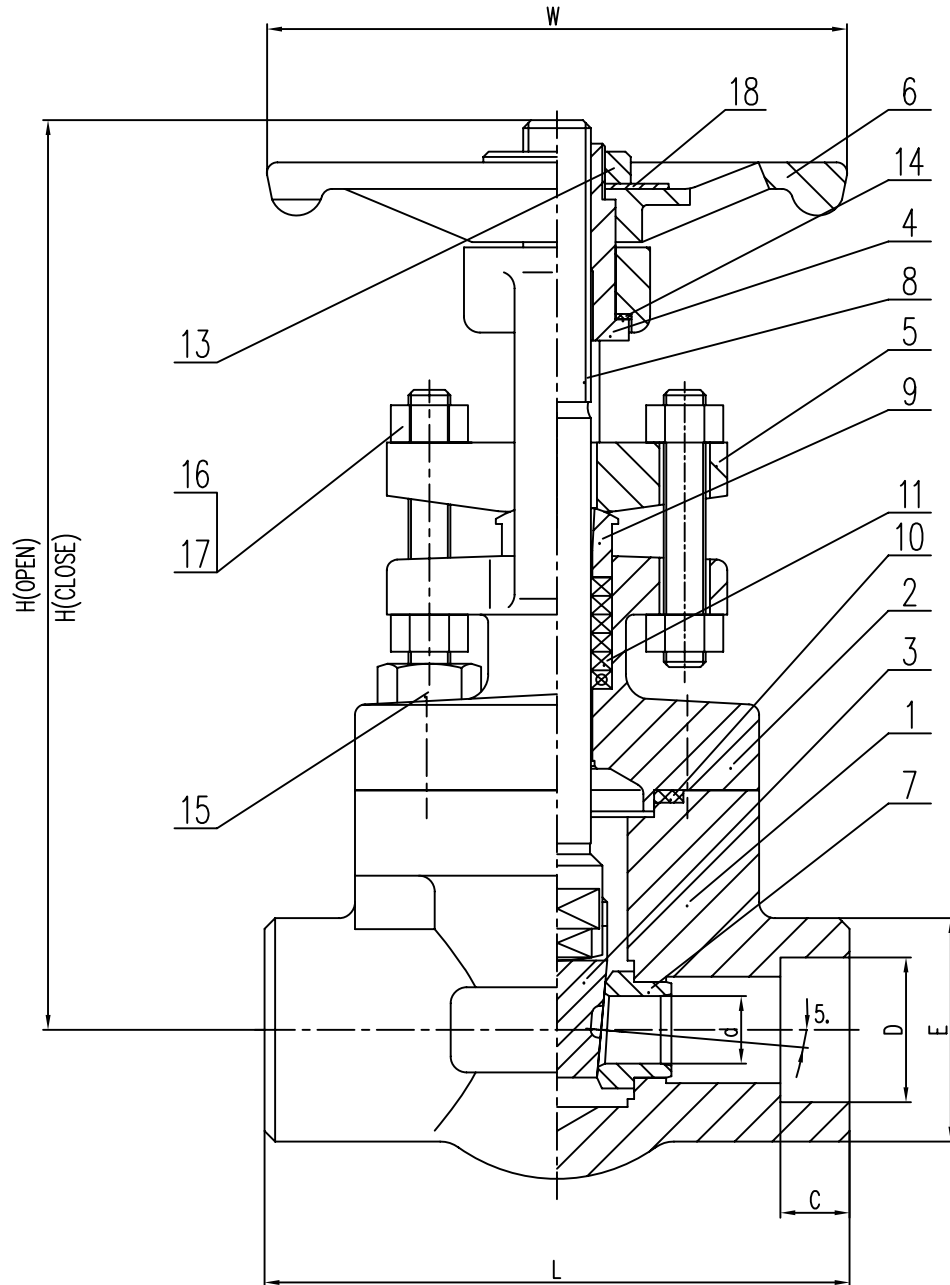
Design: ISO15761 Face to Face Dimension: per manufacture
 Inspection & Test: API 598 End Dimension: ASME B1.20.1

NO.	PART NAME	QTY.	MATERIAL	REMARK
18	NAME PLATE	1	S.S.304	
17	NUT	4	ASTM A194-8	
16	EYE BOLT	2	ASTM A193-B8	
15	STUD	4	ASTM A193-B8	
14	WASHER	1	S.S.304	
13	HANDWHEEL NUT	1	S.S.304	
11	PACKING		GRAPHITE	
10	GASKET	1	SPW+316 GRAPHITE	
9	GLAND	1	ASTM A182-F316L	
8	STEM	1	ASTM A182-F316	
7	SEAT RING	2	ASTM A182 F316/STL.6 OVERLAY	
6	HANDWHEEL	1	DUCTILE IRON	
5	GLAND FLANGE	1	ASTM A351-CF8	
4	STEM NUT	1	ASTM A276-420	
3	WEDGE	1	ASTM A182-F316	
2	BONNET	1	ASTM A182-F316L	
1	BODY	1	ASTM A182-F316L	

NO.	PART NAME	QTY.	MATERIAL	REMARK
Stan.	ISO15761	Shell Test	16.6 MPa	Draft
Class	800LB	Seat Test (Hyd.)	12.2 MPa	Check
Size	0.5~2"	Seat Test (Air)	0.6 MPa	Appr.
Rev.	0	Man.Fig.: 0.5~2G8N V3,S43/12		

Type FORGE STEEL GATE VALVE
 UserFig. MODEL 801





UNIT	SIZE	L	d	D	E	C	W	H(OPEN)	H(CLOSE)	WEIGHT(Kg)
mm	15	76	9.5	21.8	32	10	90	144.2	132.2	1.5
inch	$\frac{1}{2}$	2.99	0.37	0.86	1.26	0.39	3.54	5.68	5.20	1.5
	20	86	12.7	27.2	37	13	90	151.1	135.8	2
	$\frac{3}{4}$	3.39	0.5	1.07	1.46	0.51	3.54	5.95	5.35	2
	25	102	17.5	33.9	46	13	110	178.4	157.5	3
	1	4.02	0.69	1.33	1.81	0.51	4.38	7.02	6.20	3
	32	118	23.8	42.7	62	13	150	245	214.5	4
	1- $\frac{1}{4}$	4.65	0.94	1.68	2.44	0.51	5.91	9.65	8.44	4
	40	118	28.6	48.8	62	13	150	247.1	214.5	5.5
	1- $\frac{1}{2}$	4.65	1.13	1.92	2.44	0.51	5.91	9.73	8.44	5.5
	50	132	36.5	61.2	76	16	150	268.7	227.7	7.5
	2	5.20	1.44	2.41	2.99	0.63	5.91	10.58	8.96	7.5

APPLICABLE STANDARDS & TECHNICAL NOTES:

Design: ISO15761 Face to Face Dimension: per manufacture
 Inspection & Test: API 598 End Dimension: ASME B16.11

18	NAME PLATE	1	S.S.304	
17	NUT	4	ASTM A194-8	
16	EYE BOLT	2	ASTM A193-B8	
15	STUD	4	ASTM A193-B8	
14	WASHER	1	S.S.304	
13	HANDWHEEL NUT	1	S.S.304	
11	PACKING		GRAPHITE	
10	GASKET	1	SPW+316 GRAPHITE	
9	GLAND	1	ASTM A182-F316L	
8	STEM	1	ASTM A182-F316	
7	SEAT RING	2	ASTM A182 F316/STL.6 OVERLAY	
6	HANDWHEEL	1	DUCTILE IRON	
5	GLAND FLANGE	1	ASTM A351-CF8	
4	STEM NUT	1	ASTM A276 420	
3	WEDGE	1	ASTM A182-F316	
2	BONNET	1	ASTM A182-F316L	
1	BODY	1	ASTM A182-F316L	

NO.	PART NAME	QTY.	MATERIAL	REMARK
Stan.	ISO15761	Shell Test	16.6 MPa	Draft
Class	800LB	Seat Test (Hyd.)	12.2 MPa	Check
Size	0.5~2"	Seat Test (Air)	0.6 MPa	Appr.
Rev.	0	Man.Fig.: 0.5~2G8S V3,S43/12		
Type	FORGE STEEL GATE VALVE			
UserFig.	MODEL 801			

Warren®