

NO.	DESCRIPTION	MATERIAL
1	BODY	ASTM A-351 GR CF8M
3	CAP	ASTM A-351 GR CF8M
7	BALL	ASTM A-351 GR CF8M
8	STEM	316 STAINLESS STEEL
11	SEAT	RTFE
12	THRUST WASHER	RTFE
15	GLAND PACKING	PTFE
22	SPRING WASHER	304 STAINLESS STEEL
26	GLAND	316 STAINLESS STEEL
28	LOCK NUT	304 STAINLESS STEEL
30	HANDLE W/VINYL GRIP	304 STAINLESS STEEL

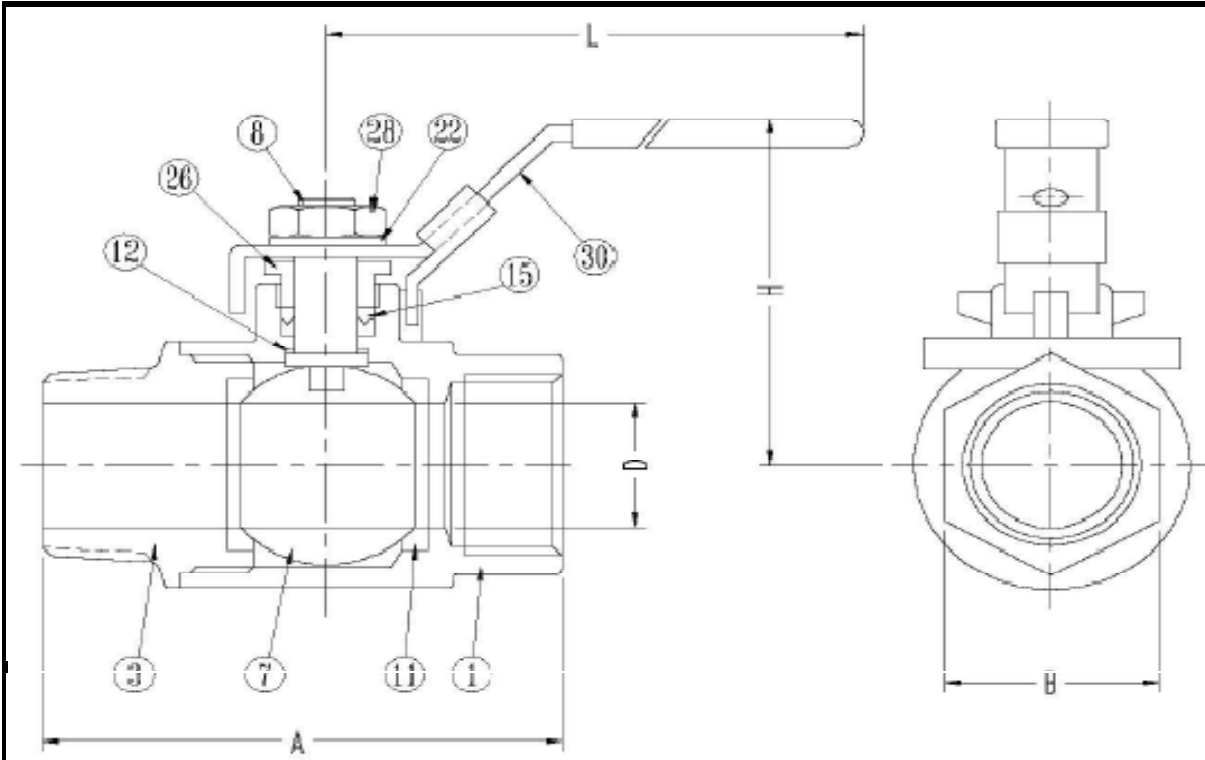
UNLESS OTHERWISE SPECIFIED DIMENSIONS IN MILLIMETERS			
M/C TOLERANCES		CASTING TOLERANCES	
UP TO	100 mm	± 0.25	UP TO 100 mm ± 1.0
OVER	100-250 mm	± 0.40	OVER 200 mm ± 2.0
OVER	250-400 mm	± 0.60	OVER 600 mm ± 2.5
OVER	400-600 mm	± 0.70	ANGLES ± 1.0
OVER	600 mm	± 0.80	

REV. 03	3/9/1998
REV. 02	7/11/1997
REV. 01	8/2/1994
JGN	Mar-92

SIZE		DIMENSIONS										WT (LBS)	
		A	B	D	H	L							
1/4"	INCH	2.53	0.81	0.36	1.76	4.25							0.48
8	MM	64.20	21.00	9.20	44.80	108.00							0.22 kg
3/8"	INCH	2.53	0.81	0.37	1.76	4.25							0.48
10	MM	64.20	21.00	9.50	44.80	108.00							0.22 kg
1/2"	INCH	2.87	1.06	0.50	1.92	4.25							0.66
15	MM	73.00	27.00	12.70	48.80	108.00							0.3 kg
3/4"	INCH	3.35	1.34	0.69	2.40	5.83							1.32
20	MM	85.00	34.00	17.50	60.90	148.00							0.6 kg

1/4" - 3/4" 2000 WOG
SEAL-WELDED BALL VALVE
ASSEMBLY MODEL NO. W20
NACE MR-01-75 COMPLIANT

WARREN
DRAWING NUMBER
3160320-SW-1



NO.	DESCRIPTION	MATERIAL
1	BODY	ASTM A-351 GR CF8M
3	CAP	ASTM A-351 GR CF8M
7	BALL	ASTM A-351 GR CF8M
8	STEM	316 STAINLESS STEEL
11	SEAT	RTFE
12	THRUST WASHER	RTFE
15	GLAND PACKING	PTFE
22	SPRING WASHER	304 STAINLESS STEEL
26	GLAND	316 STAINLESS STEEL
28	LOCK NUT	304 STAINLESS STEEL
30	HANDLE W/VINYL GRIP	304 STAINLESS STEEL

UNLESS OTHERWISE SPECIFIED DIMENSIONS IN MILLIMETERS			
M/C TOLERANCES		CASTING TOLERANCES	
UP TO	100 mm	± 0.25	UP TO 100 mm ± 1.0
OVER	100-250 mm	± 0.40	OVER 200 mm ± 2.0
OVER	250-400 mm	± 0.60	OVER 600 mm ± 2.5
OVER	400-600 mm	± 0.70	ANGLES ± 1.0
OVER	600 mm	± 0.80	

REV. 03	3/9/1998
REV. 02	7/11/1997
REV. 01	8/2/1994
JGN	Mar-92

SIZE		DIMENSIONS										WT (LBS)	
		A	B	D	H	L							
1	INCH	3.78	1.61	0.87	2.56	5.83							1.80
25	MM	96.00	41.00	22.20	64.90	148.00							0.82 kg
1-1/4	INCH	3.60	1.85	1.00	2.80	7.80							2.51
32	MM	91.44	46.99	25.40	71.12	198.12							1.138 kg
1-1/2	INCH	4.10	2.45	1.30	3.00	7.80							3.74
40	MM	104.14	62.23	33.02	76.20	198.12							1.70 kg
2	INCH	4.60	2.87	1.50	3.20	7.80							5.53
50	MM	116.84	72.90	38.10	81.28	198.12							2.51 kg

1" - 2" 2000 WOG
SEAL-WELDED BALL VALVE
ASSEMBLY MODEL NO. W20
NACE MR-01-75 COMPLIANT

WARREN
DRAWING NUMBER
3160320-SW-2