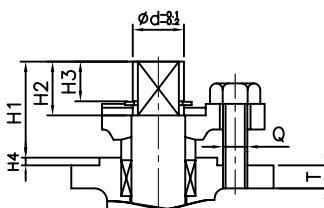
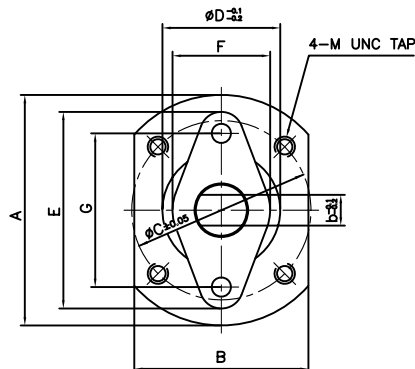
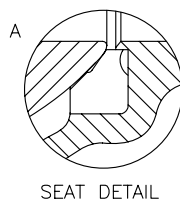
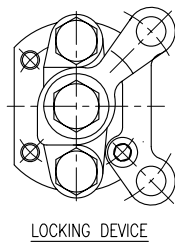
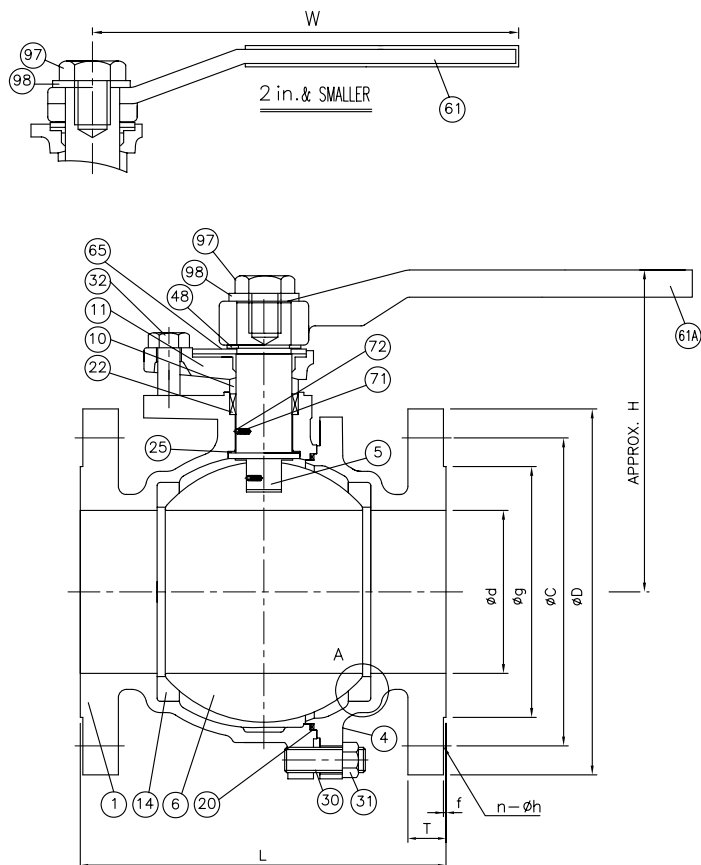


FIGURE NUMBER 6152TT



- NOTE
1. ALL DIMENSIONS ARE IN INCHES & MILLIMETERS.
 2. HYDROSTATIC AND PNEUMATIC TESTS ARE CONDUCTED PER STANDARD, API 598.
 3. THE FINISHES OF CONTACT FACE OF END FLANGES ARE MACHINED 125 - 250AARH WITH SERRATED SPIRAL FINISH.
 4. END FLANGE DIMENSIONS : ANSI B16.5
 5. ISO MOUNTING PAD.(ISO 5211)
 6. PADLOCKING DEVICE, OPEN & CLOSED.

DM. NPS	ød	b	A	B	øC	M UNC	øD	E
1/2"	10	6	55	39	42	1/4-20	24	57
3/4"	10	6	55	39	42	1/4-20	24	57
1"	14	8	65	48	50	1/4-20	35	65
1 1/2"	20	12	90	68	70	5/16-18	46	80
2"	20	12	90	68	70	5/16-18	46	80
2 1/2"	27	17	125	95	102	3/8-16	62	110
3"	27	17	125	95	102	3/8-16	62	110
4"	34	22	125	95	102	3/8-16	70	110

DM. NPS	F	G	Q	H1	H2	H3	H4	T	ISO 5211
1/2"	24	42	5/16	19	9.5	-	1	7	F04
3/4"	24	42	5/16	19	9.5	-	1	8	F04
1"	32	49	5/16	21.7	9.7	-	1	9	F05
1 1/2"	36	60	3/8	31	14.5	9.6	1	9	F07
2"	36	60	3/8	31	14.5	9.6	1	9	F07
2 1/2"	58	84	1/2	44.5	23	18.1	2	13	F10
3"	58	84	1/2	43.5	23	18.1	1	12	F10
4"	58	84	1/2	49	30	24.7	3	12	F10

NPS	BORE	FACE TO FACE	CENTER TO TOP	LENGTH	END FLANGE						WEIGHT (Kg)	Q'TY
					OD	BCD	OD OF RF	THICK.	DEPTH	NO. & DIA.		
	d	L	H	W	D	C	g	T	f	n-øh		
1/2	13	108	84	130	89	60.5	35	11.2	1.6	4-16	1.8	-
	.51	4.25	3.3	5.1	3.5	2.38	1.38	.44	.06	4-62		
3/4	19	117	88	130	99	70.0	43	11.2	1.6	4-16	2.3	-
	.75	4.61	3.46	5.1	3.88	2.75	1.69	.44	.06	4-62		
1	25	127	102	155	108	79.2	51	11.2	1.6	4-16	3.2	-
	1	5.0	4.01	5.1	4.25	3.12	2.0	.44	.06	4-62		
1 1/2	38	165	127	230	127	98.6	73	14.3	1.6	4-16	6.6	-
	1.5	6.5	5	9.1	5.0	3.88	2.88	.56	.06	4-62		
2	51	178	142	230	152	120.7	92	15.8	1.6	4-19	9.8	-
	2	7.0	5.59	9.1	6.0	4.75	3.62	.62	.06	4-75		
2 1/2	64	191	152	350	178	139.7	105	17.5	1.6	4-19	15.8	-
	2.5	7.5	5.98	13.8	7.0	5.5	4.12	.69	.06	4-75		
3	76	203	170	350	191	152.4	127	19.1	1.6	4-19	21.3	-
	3	8.0	6.69	13.8	7.5	6.0	5.0	.75	.06	4-75		
4	102	229	206	450	229	190.5	157	23.9	1.6	8-19	34.7	-
	4	9.0	8.11	17.7	9.0	7.5	6.19	.94	.06	8-75		

QTY	PART NAME	Q'TY	MATERIAL	REMARKS
1	TOP WASHER	1	A240-304	
1	TOP BOLT	1	A193-B8	
2	LOCKING PLATE BOLT	2	A193-B8	
1	LOCKING PLATE	1	A240-304	
1 Set	STATIC BALL	1 Set	A276-316	
1 Set	SPRING	1 Set	A580-316	
1	STOPPER	1	A240-304	
1	HANDLE	1	A536	2 1/2 & LARGER
1	VINYL COATED HANDLE	1	A283-D	2 & SMALLER
1	SNAP RING	1	A686-W1	1 1/2 & LARGER Cr plate
2	GLAND BOLT	2	A193-B8	
1 Set	CAP BOLT NUT	1 Set	A194-8	
1 Set	CAP BOLT	1 Set	A193-B8	
1	THRUST WASHER	1	RTFE	
1	GLAND PACKING	1	PTFE	
1	GASKET	1	PTFE	
2	SEAT RING	2	PTFE	
1	GLAND FLANGE	1	A351-CF8	
1	GLAND	1	ALLOY 20	
1	BALL	1	A351-CN7M	
1	STEM	1	ALLOY 20	
1	CAP	1	A351-CN7M	
1	BODY	1	A351-CN7M	

NO	DATE	DESCRIPTION	PRE'D	APP'D
3				
2				
1	FEB,06.09	FOR REFERENCE	<i>j.j.Him</i>	<i>w.w.Sec</i>
0	AUG,27.08	FOR REFERENCE	<i>j.j.Him</i>	<i>w.w.Sec</i>

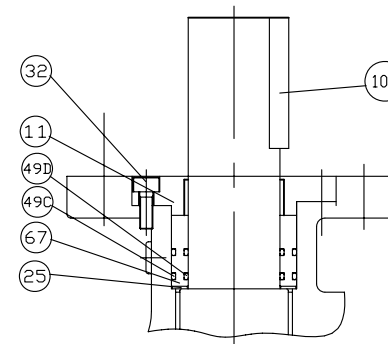
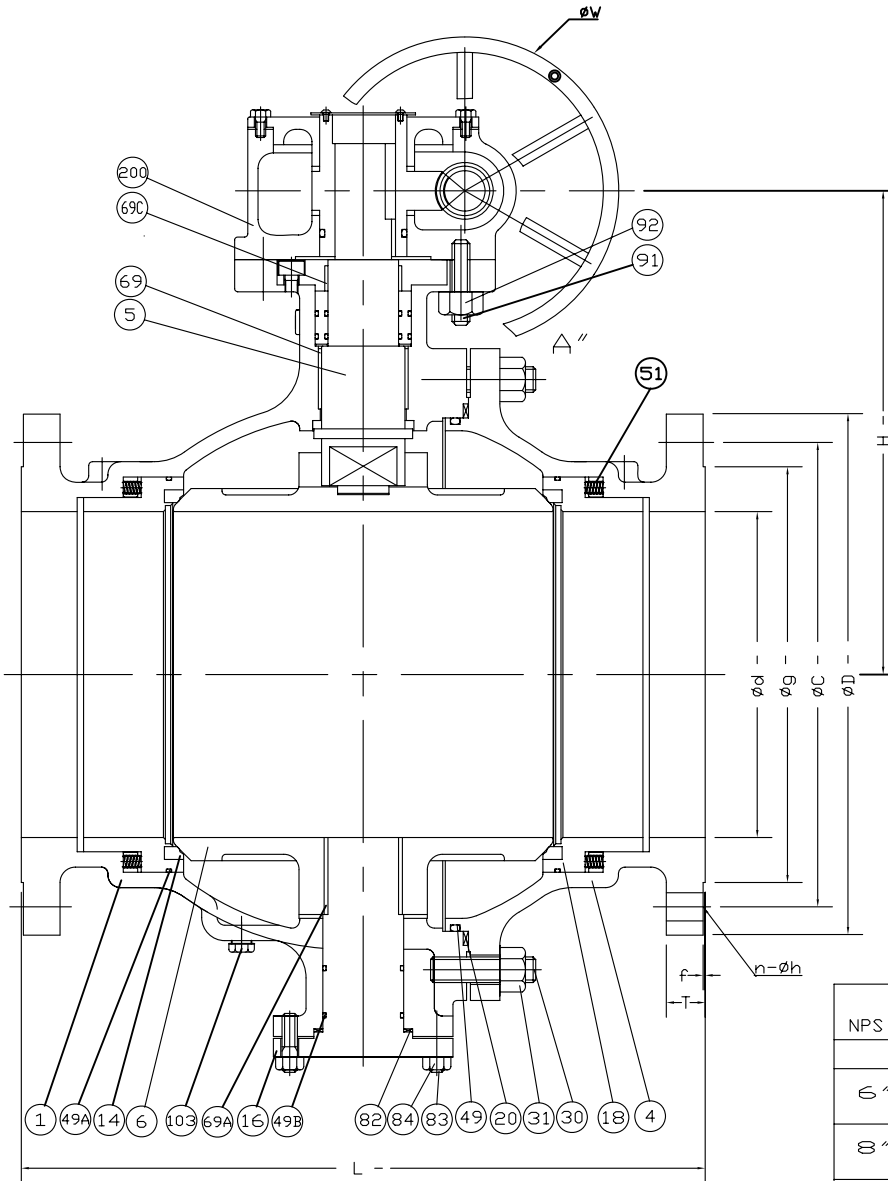
CLASS 150 CAST ALLOY STEEL BALL VALVE
BOLTED CAP, RF, FULL BORE.

WARREN VALVE

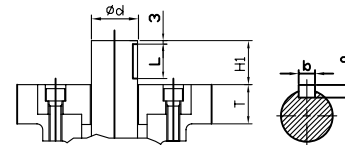
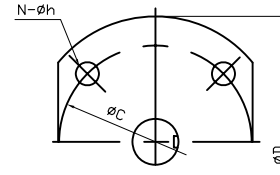
DWG NO : BF2-A15-F-015_100-RF-20-L0-Rev.1

NOTE

1. ALL DIMENSIONS ARE IN INCHES AND MILLIMETERS.
2. HYDROSTATIC AND PNEUMATIC TESTS ARE CONDUCTED PER STANDARD, API 598.
3. THE FINISHES OF CONTACT FACE OF END FLANGES ARE MACHINED 125-250 AARH WITH SERRATED SPIRAL FINISH.
4. END FLANGE DIMENSIONS : ASME B16.5
5. FACE TO FACE DIMENSIONS : ASME B16.10



DETAIL A



SIZE	øD	øC	N-øh	T	
6"	150A	175	140	4-ø18	29
8"	200A	175	140	4-ø18	26
10"	250A	210	165	4-ø22	22
12"	300A	210	165	4-ø22	22
14"	350A	240	200	4-ø22	27
16"	400A	300	254	8-ø18	26

SIZE	ød	b x a x L (KEY SIZE)	H1	ISO
6"	150A	14 x 9 x 47	55.5	F14
8"	200A	14 x 9 x 67	83	F14
10"	250A	16 x 10 x 70	79.5	F16
12"	300A	16 x 10 x 70	79.5	F16
14"	350A	20 x 12 x 72	80.5	F20
16"	400A	20 x 12 x 72	89.5	F25

NPS	FLOW PASSAGE DIAMETER	FACE TO FACE	CENTER TO TOP	END FLANGE						øW	WEIGHT (kg)	Q'TY
				OD	BCD	OD OF RF	THICK.	THICK OF RF	HOLE INCL. & DIA.			
6"	ød	L	H	øD	øC	øg	T	f	n-øh			
	152	393.7	287	279	241.5	216	25.4	1.6	8-22	500	125	-
8"	6	15.50	11.3	11.00	9.50	8.50	1.00	0.06	8-0.88	19.7		
	203	457.2	332	343	298.5	270	28.6	1.6	8-22	500	195	-
10"	8	18.00	13.07	13.50	11.75	10.62	1.12	0.06	8-0.88	19.7		
	254	533.4	415.5	406	362	324	30.2	1.6	12-25	710	270	-
12"	10	21.00	16.36	16.00	14.25	12.75	1.19	0.06	12-1.00	28.0		
	305	609.6	453.5	483	432	381	31.8	1.6	12-25	710	460	-
14"	12	24.00	17.85	19.00	17.00	15.00	1.25	0.06	12-1.00	28.0		
	336.5	685.8	483.5	533	476	413	35.1	1.6	12-29	710	790	-
16"	336.5	27.00	19.04	21.00	18.75	16.25	1.38	0.06	12-1.12	28.0		
	387	762.0	511	597	539	470	36.6	1.6	16-29	800	1030	-
	387	30.00	20.11	23.50	21.25	18.50	1.44	0.06	16-1.12	31.5		

REV.	DATE	DESCRIPTION	PRE'D BY	APP'D BY
△	APR,02,09	FOR REFERENCE	jjkim	wwlee
△	FEB,06,09	FOR REFERENCE	jjkim	wwlee
△	FEB,04,09	FOR REFERENCE	jjkim	wwlee
△	AUG,27,08	FOR REFERENCE	jjkim	wwlee

QTY	DESCRIPTION	SET	MATERIAL	REMARKS
1	GEAR BOX	1	A536	
1	PLUG BOLT	1	A276-316	
1	KEY	1	AISI1045	
1	MOUNTING BOLT NUT	1	A194-B8	
1	MOUNTING BOLT	1	A193-B8	
1	BOTTOM COVER NUT	1	A194-B8	
1	BOTTOM COVER BOLT	1	A193-B8	
1	BOTTOM COVER GASKET	1	PTFE	
1	DU-BUSH	1	COMMERCIAL	TEFLON COATED
1	DU-BUSH	1	COMMERCIAL	TEFLON COATED
1	DU-BUSH	1	COMMERCIAL	TEFLON COATED
1	STEM BUSING	1	ALLOY 20	
1	SPRING	1	INCONEL	
2	O-RING	2	VITON	
2	O-RING	2	VITON	
2	O-RING	2	VITON	
2	O-RING	2	VITON	
1	O-RING	1	VITON	
2	GLAND BOLT	2	A193-B8	
1	CAP BOLT NUT	1	A194-B8	
1	CAP BOLT	1	A193-B8	
1	THRUST WASHER	1	A240-316	TEFLON COATED
1	GASKET	1	PTFE	
2	SEAT RETAINER	2	A351-CN7M	
1	BOTTOM COVER	1	A351-CN7M	
2	SEATING	2	RTFE	
1	GLAND FLANGE	1	A276-304	
1	BALL	1	A351-CN7M	
1	STEM	1	ALLOY 20	
1	CAP	1	A351-CN7M	
1	BODY	1	A351-CN7M	

CLASS 150, CAST ALLOY STEEL, BALL VALVE
BOLTED CAP, RF, FULL BORE, GEAR.

WARREN VALVE